



**DOGHER**  
 TOOLS  
*Making Solutions*



3%	<i>Prof</i>		348
4%	<i>Std</i>		350
9 x 12 mm			352
14 x 18 mm			353
4%			354
3%			354

5%		355
1/4"		357
1/4"		357

# Torque Wrenches

# 625

# Torque Wrenches

**Prof** Professional Series



Instructions Manual & Certificate Included



**625**

Professional Torque Wrench

±3%



1/4"



N*m		L mm		Accur.	in-lb	Part N°	€
1,5~6	0,05	210	1/4"	±3%	-	625-01-06	241,14
2~10	0,1	280	1/4"	±3%	22,1-84,1	625-02-10	256,95
10~50	0,25	330	1/4"	±3%	99,6-431,5	625-10-50	268,43

**626**

Professional Torque Wrench

±3%



3/8"



N*m		L mm		Accur.	ft-lb	Part N°	€
10~60	0,5	340	3/8"	±3%	9,2-42,4	626-10-60	283,13
20~100	0,5	435	3/8"	±3%	16,6-71,9	626-20-100	292,94

**626**

Torque Wrench Spare Parts



N*m	Part N°	€
20~100	626-20R	57,45

**627**

Professional Torque Wrench

±3%



1/2"



N*m		L mm		Accur.	ft-lb	Part N°	€
20~100	0,5	435	1/2"	±3%	-	627-20-100	310,29
40~200	1,0	515	1/2"	±3%	33,2-143,8	627-40-210	317,00
80~400	2,0	615	1/2"	±3%	66,4-287,8	627-70-350	365,16

**627**

Torque Wrench Spare Parts



N*m	Part N°	€
20~100	627-20R	54,52
40~200	627-40R	58,02
80~400	627-70R	71,59

**NOTICE**

Never use a torque wrench to loose bolts or nuts • Stop tightening once you reach the "Click". The wrench can be used CW/CCW direction





Instructions Manual & Certificate Included



**628**

Professional Torque Wrench

±3%



3/4"



N*m	mm	L mm	□	Accur.	ft-lb	Part N°	€
<b>100~600</b>	5,0	1050	3/4"	±3%	92-424	<b>628-100-500</b>	<b>1.109,41</b>
<b>150~800</b>	5,0	1250	3/4"	±3%	129-572	<b>628-140-700</b>	<b>1.309,88</b>
<b>200~1000</b>	5,0	1250	3/4"	±3%	166-719	<b>628-200-1000</b>	<b>1.565,41</b>



**628**

Torque Wrench Spare Parts



N*m	Part N°	€
<b>100~600</b>	<b>628-100R</b>	<b>143,21</b>
<b>150~800</b>	<b>628-140R</b>	<b>153,93</b>
<b>200~1000</b>	<b>628-200R</b>	<b>169,81</b>

**629**

Professional Torque Wrench

±3%



1"



N*m	mm	L mm	□	Accur.	ft-lb	Part N°	€
<b>150~800</b>	5,0	1250	1"	±3%	129-572	<b>629-150-800</b>	<b>1.424,03</b>
<b>300~1500</b>	10,0	1850	1"	±3%	258-1070	<b>629-300-1500</b>	<b>2.779,30</b>
<b>400~2000</b>	20,0	2300	1"	±3%	369-1402	<b>629-400-2000</b>	<b>4.515,84</b>
<b>500~2500</b>	20,0	2750	1"	±3%	443-1771	<b>629-500-2500</b>	<b>4.926,40</b>



**629**

Torque Wrench Spare Parts



N*m	Part N°	€
<b>150~800</b>	<b>629-150R</b>	<b>162,76</b>
<b>300~1500</b>	<b>629-300R</b>	<b>301,48</b>
<b>400~2000</b>	<b>629-400R</b>	<b>516,10</b>
<b>500~2500</b>	<b>629-500R</b>	<b>563,03</b>

NOTICE

Never use a torque wrench to loose bolts or nuts • Stop tightening once you reach the "Click". The wrench can be used CW/CCW direction



# Torque Wrenches

**Std** Std Series

**DOGHER**  
TOOLS



Instructions Manual & Certificate Included

**630**

Std Torque Wrench

±4%



1/4"



N*m		L mm		Accur.	in-lb	Part N°	€
5~25	0,2	280	1/4"	±4%	44,3-221,3	630-05-25	180,93

**630**

Torque Wrench Spare Parts



N*m	Part N°	€
5~25	630-05R	34,46

**631**

Std Torque Wrench

±4%



3/8"



N*m		L mm		Accur.	in-lb	Part N°	€
5~25	0,2	280	3/8"	±4%	44,3-221,3	631-05-25	215,54

N*m		L mm		Accur.	ft-lb	Part N°	€
20~110	1,0	370	3/8"	±4%	14,8-81,1	631-19-110	239,59

**631**

Torque Wrench Spare Parts



N*m	Part N°	€
5~25	631-05R	41,05
20~110	631-19R	45,64

**NOTICE**

Never use a torque wrench to loose bolts or nuts • Stop tightening once you reach the "Click". The wrench can be used CW/CCW direction





Instructions Manual & Certificate Included

## 632

### Std Torque Wrench

±4%



1/2"



ft-lb		L mm		Accur.	N*m	Part N°	€
<b>14-203</b>	1,0	450	1/2"	±4%	10-150	<b>632-14-203</b>	<b>255,55*</b>

N*m		L mm		Accur.	ft-lb	Part N°	€
<b>42-210</b>	1,0	450	1/2"	±4%	31-154,9	<b>632-42-210</b>	<b>288,67</b>
<b>70-340</b>	3,0	570	1/2"	±4%	36,9-258,1	<b>632-70-350</b>	<b>353,30</b>

## 632

### Torque Wrench Spare Parts



N*m	Part N°	€
<b>14-203</b>	<b>632-14R</b>	<b>48,68</b>
<b>42-210</b>	<b>632-42R</b>	<b>49,27</b>
<b>50-350</b>	<b>632-70R</b>	<b>65,53</b>

## 633

### Std Torque Wrench

±4%



3/4"



N*m		L mm		Accur.	kg-M	Part N°	€
<b>90-450</b>	1,0	850	3/4"	±4%	6,6-45,9	<b>633-65-450</b>	<b>683,05</b>

N*m		L mm		Accur.	ft-lb	Part N°	€
<b>140-700</b>	2,5	1065	3/4"	±4%	103,3-464,7	<b>633-140-700</b>	<b>1.037,07</b>
<b>140-980</b>	3,5	1215	3/4"	±4%	103,3-722,8	<b>633-140-980</b>	<b>1.180,11</b>

## 634

### Std Torque Wrench

±4%



1"



N*m		L mm		Accur.	ft-lb	Part N°	€
<b>140-980</b>	3,5	1215	1"	±4%	103,3-722,8	<b>634-140-980</b>	<b>1.360,08</b>

**NOTICE**

Never use a torque wrench to loose bolts or nuts • Stop tightening once you reach the "Click". The wrench can be used CW/CCW direction



# Torque Wrenches

Interchangeable & Spare Heads



636

Interchangeable head Torque Wrench



Instructions Manual & Certificate Included

±3%

9x12 mm



N*m	L mm	Accur.	in-lb	Part N°	€
4~20	0,1 315	±3%	39,8-172,6	636-04-20	264,31

N*m	L mm	Accur.	ft-lb	Part N°	€
20~100	0,5 430	±3%	16,6-71,9	636-20-100	285,97

636

Open Ended Insert Tool



CrV

9x12 mm



mm	Part N°	€
7	636-07	33,61
8	636-08	33,61
9	636-09	33,61
10	636-10	33,61
11	636-11	33,61
12	636-12	33,61
13	636-13	33,61
14	636-14	33,61
15	636-15	33,61
16	636-16	33,61
17	636-17	33,61
18	636-18	33,61
19	636-19	33,61
21	636-21	38,44
22	636-22	41,80
24	636-24	44,39
27	636-27	47,12
30	636-30	50,53
32	636-32	53,46
36	636-36	71,74

636

Ring Torque Insert Tool



CrV

9x12 mm



mm	Part N°	€
7	636-07X	35,32
8	636-08X	35,32
9	636-09X	35,32
10	636-10X	35,32
11	636-11X	35,32
12	636-12X	35,32
13	636-13X	35,32
14	636-14X	35,32
15	636-15X	35,32
16	636-16X	35,32
17	636-17X	35,32
18	636-18X	35,32
19	636-19X	35,32
21	636-21X	40,26
22	636-22X	41,82

636

Increasing Adaptor

9x12 mm

14x18 mm



Part N°	€
636-001	42,80

636

Torque Ratchet Head

9x12 mm



Part N°	€
636-1/4	41,16
636-3/8	51,05
636-1/2	63,04

**637**

Interchangeable head Torque Wrench



Instructions Manual & Certificate Included

±3%

14x18 mm



N* m	mm	L mm	mm	Accur.	ft-lb	Part N°	€
40~200	1,0	485	14x18	±3%	33,2-143,8	<b>637-40-200</b>	<b>327,97</b>
60~340	2,0	585	14x18	±3%	51,6-243,4	<b>637-60-340</b>	<b>359,09</b>

**637**

Open Ended Insert Tool



CrV

14x18 mm



mm	mm	Part N°	€
13	14 x 18	<b>637-13</b>	<b>43,25</b>
14	14 x 18	<b>637-14</b>	<b>43,25</b>
15	14 x 18	<b>637-15</b>	<b>43,25</b>
16	14 x 18	<b>637-16</b>	<b>43,25</b>
17	14 x 18	<b>637-17</b>	<b>43,25</b>
18	14 x 18	<b>637-18</b>	<b>43,25</b>
19	14 x 18	<b>637-19</b>	<b>43,25</b>
21	14 x 18	<b>637-21</b>	<b>43,25</b>
22	14 x 18	<b>637-22</b>	<b>43,25</b>
23	14 x 18	<b>637-23</b>	<b>43,25</b>
24	14 x 18	<b>637-24</b>	<b>43,25</b>
25	14 x 18	<b>637-25</b>	<b>43,25</b>
26	14 x 18	<b>637-26</b>	<b>48,45</b>
27	14 x 18	<b>637-27</b>	<b>48,45</b>
30	14 x 18	<b>637-30</b>	<b>48,45</b>
32	14 x 18	<b>637-32</b>	<b>48,45</b>
34	14 x 18	<b>637-34</b>	<b>53,00</b>
36	14 x 18	<b>637-36</b>	<b>53,00</b>
38	14 x 18	<b>637-38</b>	<b>55,65</b>
40	14 x 18	<b>637-40</b>	<b>55,65</b>
41	14 x 18	<b>637-41</b>	<b>55,65</b>
46	14 x 18	<b>637-46</b>	<b>139,41</b>
48	14 x 18	<b>637-48</b>	<b>139,41</b>
50	14 x 18	<b>637-50</b>	<b>139,41</b>
70	14 x 18	<b>637-70</b>	<b>267,47</b>

**637**

Ring Torque Insert Tool



CrV

14x18 mm



mm	mm	Part N°	€
13	14 x 18	<b>637-13X</b>	<b>43,25</b>
14	14 x 18	<b>637-14X</b>	<b>43,25</b>
15	14 x 18	<b>637-15X</b>	<b>43,25</b>
16	14 x 18	<b>637-16X</b>	<b>43,25</b>
17	14 x 18	<b>637-17X</b>	<b>43,25</b>
18	14 x 18	<b>637-18X</b>	<b>43,25</b>
19	14 x 18	<b>637-19X</b>	<b>43,25</b>
21	14 x 18	<b>637-21X</b>	<b>43,25</b>
22	14 x 18	<b>637-22X</b>	<b>43,25</b>
24	14 x 18	<b>637-24X</b>	<b>43,25</b>
27	14 x 18	<b>637-27X</b>	<b>48,45</b>
30	14 x 18	<b>637-30X</b>	<b>49,41</b>
32	14 x 18	<b>637-32X</b>	<b>49,41</b>
34	14 x 18	<b>637-34X</b>	<b>54,05</b>
36	14 x 18	<b>637-36X</b>	<b>54,05</b>
41	14 x 18	<b>637-41X</b>	<b>54,05</b>

**637**

Reducing Adaptor

14x18 mm

9x12 mm



mm	mm	Part N°	€
<b>14X18</b>	9 x 12	<b>637-001</b>	<b>34,55</b>

**637**

Torque Ratchet Head

14x18 mm



mm	mm	Part N°	€
<b>3/8"</b>	14 x 18	<b>637-3/8</b>	<b>54,63</b>
<b>1/2"</b>	14 x 18	<b>637-1/2</b>	<b>63,02</b>

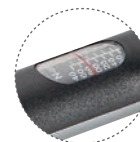
# Torque Wrenches

**Prof** Professional Series

**DOGHER**  
TOOLS



Instructions Manual & Certificate Included

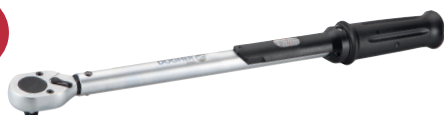


**638**

Professional Torque Wrench

±4%

1/4"



N* m	L mm	Accur.	Part N°	€
4~20	0,1 374	1/4" ±4%	638-04-20	240,69

**638**

Professional Torque Wrench

±4%

3/8"



N* m	L mm	Accur.	Part N°	€
20~100	0,5 478	3/8" ±4%	638-20-100	255,50

**638**

Professional Torque Wrench

±4%

1/2"



N* m	L mm	Accur.	Part N°	€
40~210	1,0 562	1/2" ±4%	638-40-210	288,01
60~360	1,0 630	1/2" ±4%	638-60-360	323,63



NOTICE

Never use a torque wrench to loose bolts or nuts • Stop tightening once you reach the "Click". The wrench can be used CW/CCW direction

**635**

Flexible Torque Wrench

±3%



N* m	L mm	Accur.	Part N°	€
20~100	0,5 465	3/8" ±3%	635-20-100	294,35 *



NOTICE

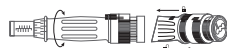
Never use a torque wrench to loose bolts or nuts • Stop tightening once you reach the "Click". The wrench can be used CW/CCW direction

**640**

Interchangeable Torque Wrenches Set

**11**  
Pcs

3%



40-200 Nm



1/2"

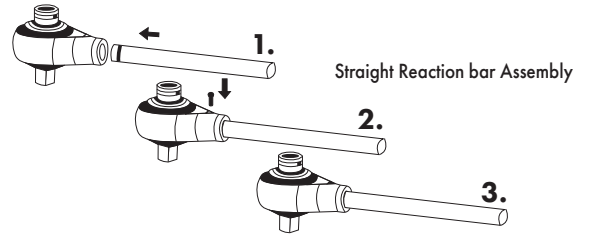
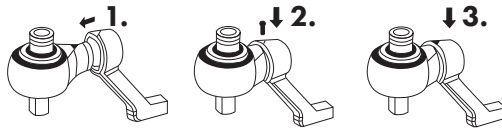


13 • 14 • 15 • 17 • 19 • 22 • 24 • 27 • 30 mm

N* m	L mm	Accur.	Part N°	€
40~200	510	14x18 3%	640-001	712,43



Cranked Reaction bar Assembly



**645**

Torque Multiplier in Carrying Case

±5%

• Includes Cranked Reaction bar, Straight Reaction bar and Release kit



IN	OUT	Accur.	Ratio	IN (Max) Nm	OUT (Max) Nm	g.	Part N°	€
1/2"	3/4"	±5 %	1 : 5	300	1500	6500	645-001	1.099,45

**645**

Torque Multiplier in Carrying Case

±5%

• Includes Cranked Reaction bar, Straight Reaction bar and Release kit



IN	OUT	Accur.	Ratio	IN (Max) Nm	OUT (Max) Nm	g.	Part N°	€
3/4"	1"	±5 %	1 : 5	540	2700	6500	645-002	1.205,59

# Torque Wrenches

## Torque Multiplier in Carrying Sets



645

### Torque Multiplier in Carrying Case

±5%

- Includes Cranked Reaction bar, Straight Reaction bar and Release kit



IN	OUT	Accur.	●:●	IN (Max) Nm	OUT (Max) Nm	g.	Part N°	€
1/2"	1"	±5 %	1 : 5	300	1500	6500	645-006	1.205,69

645

### Special Torque Multiplier for Truck Wheel Nuts Case

±5%

- Includes 32mm and 33mm sockets, Handle and Extension bar



- The Cranked Reaction bar is Integrated in the Body of the Tool
- This torque multiplier can be used only to loosen bolts or nuts specially from trucks and industrial vehicles

IN	OUT	Accur.	●:●	OUT (Max) Nm	Part N°	€
1"	1"	±5 %	1 : 56	3200	645-003	743,00

**642**

Torque Screwdriver  
Square Drive

1/4"

±6%



□		L mm	N*m	Accur.	Part N°	€
1/4"	0,02	135	0,4-2,6	±6%	642-0,4-2	257,77

**643**

Torque Screwdriver  
Bit Holder

1/4"

±6%



◇		L mm	N*m	Accur.	Part N°	€
1/4"	0,01	180	0,1~1,2	±6%	643-0,1-1,2	257,77
1/4"	0,02	135	0,4-2,6	±6%	643-0,4-2	257,77*
1/4"	0,05	195	1~3,5	±6%	643-1-3,5	257,77

\* Until end of stock

## Professional Torque Angle Gauge

**646**

Professional Torque Angle Gauge with Flexible Arm



• Metal Spring Clamp with metal flexible arm

IN □	OUT □	Part N°	€
1/2"	1/2"	646-001	100,17

**646**

Professional Torque Angle Gauge



IN □	OUT □	Part N°	€
1/2"	1/2"	646-002	45,44

# Torque Wrenches

## Conversion Table



• Important advices:

1. Once you've used the torque wrench, leave it in the lowest **TORQUE (0 N \* M)**. Otherwise work piece may get damaged and the torque wrench out of order. Warranty won't apply in this case.
2. After the first using or being left unused for a long period and it is required to use again, make sure to use lower torque to operate for 5-10 times so that the components within may be fully lubricated by the special-purpose lubricant oil.

• Operational Instructions of Torque Wrench:

1. Before operating this torque wrench please study carefully the following instructions.
2. The user is strongly advised to always wear eye protection during operation for safety precaution.
3. Do not apply exceeding limited maximum torque tolerances as indicated.  
Do not attempt to alter any components inside the product as it will most likely result in loss of original accuracy. The torque wrench is lubricated for good, hence no need to lubricate under any circumstances and should not be oiled.
5. This torque wrench should be considered as precision measuring instrument; therefore, it should be always stored in the blow mould case provided. Regular maintenance is strongly recommended. Never throw it around recklessly, hammer with it as such behaviors will certainly damage the product.
6. Do not attempt to use any extension on the handle to apply torque.
7. This Torque Wrench is designed for tightening threaded fasteners manually only. Do not use it as a nut-breaker or for any other applications.  
The user is suggested to learn the different amounts of torque, so to avoid the possibility of damaging the products or injury oneself resulted from accidentally applying exceeding force on the product.
- 8.

• WARRANTY :

It won't apply any warranty in case the torque wrench has been modified by the user.

We'll need complete explanations about the use of the torque wrench before accepting the tool to be sent back.

ft. lbs	kgm or mkp	Nm	Nm	ft. lbs	kgm or mkp
5	0.69	6.78	10	7.38	1.02
10	1.38	13.56	20	14.75	2.04
15	2.07	20.34	30	22.13	3.06
20	2.76	27.12	40	29.50	4.08
25	3.46	33.90	50	36.88	5.10
30	4.15	40.68	60	44.26	6.12
35	4.84	47.46	70	51.63	7.14
40	5.53	54.24	80	59.01	8.16
45	6.22	61.02	90	66.38	9.18
50	6.91	67.80	100	73.76	10.20
55	7.60	74.58	110	81.14	11.22
60	8.29	81.36	120	88.51	12.24
65	8.98	88.14	130	95.89	13.26
70	9.67	94.92	140	103.26	14.28
75	10.37	101.70	150	110.64	15.30
80	11.06	108.48	160	118.02	16.32
85	11.75	115.26	170	125.39	17.34
90	12.44	122.04	180	132.77	18.36
95	13.13	128.82	190	140.14	19.38
100	13.82	135.60	200	147.52	20.40
105	14.51	142.38	210	154.90	21.42
110	15.20	149.16	220	162.27	22.44
115	15.89	155.94	230	169.65	23.46
120	16.58	162.72	240	177.02	24.48
125	17.28	169.50	250	184.40	25.50
130	17.97	176.28	260	191.78	26.52
135	18.66	183.06	270	199.15	27.54
140	19.35	189.84	280	206.53	28.56
145	20.04	196.62	290	213.91	29.58
150	20.73	203.40	300	221.29	30.60
155	21.42	210.18	310	228.67	31.62
160	22.11	216.96	320	236.05	32.64
165	22.80	223.74	330	243.43	33.66
170	23.49	230.52	340	250.81	34.68
175	24.19	237.30	350	258.19	35.70
180	24.88	244.08	360	265.57	36.72
185	25.57	250.86	370	272.95	37.74
190	26.26	257.64	380	280.33	38.76
195	26.95	264.42	390	287.71	39.78
200	27.64	271.20	400	295.09	40.80
205	28.33	277.98	410	302.47	41.82
210	29.02	284.76			
215	29.71	291.54			
220	30.40	298.32			
225	31.09	305.10			
230	31.78	311.88			
235	32.47	318.66			
240	33.16	325.44			
245	33.85	332.22			
250	34.54	339			
260	35.88	352.56			
270	37.26	366.12			
280	38.64	379.68			
290	40.02	393.24			
300	41.40	406.80			

\*1 ft. lbs = 1,36 Nm

\*1 kgm or mkp = 9,8 Nm